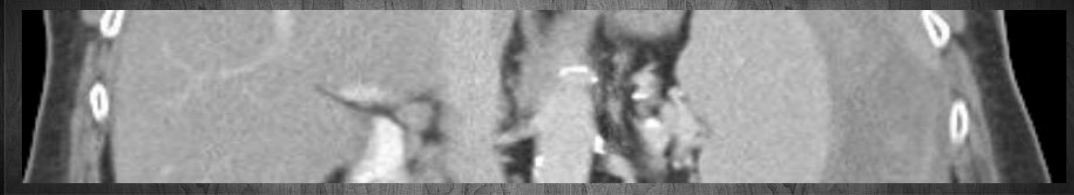


The Melbourne Clinical Exam Course



Course Overview

Many candidates preparing for the College of Intensive Care Medicine (CICM) clinical examinations find success difficult to achieve despite possessing adequate theoretical knowledge. Clinical exams require a very different skill set to that needed for written exams or indeed every day clinical practice. This two day course has been developed to teach the skills necessary to bridge the gap between knowledge and performance in the examinations.

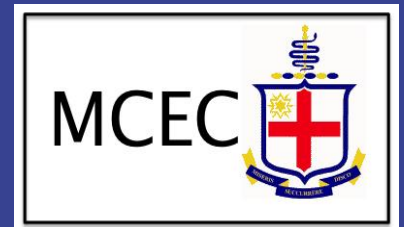
The course is specifically aimed at trainees sitting the CICM fellowship clinical examination. Ideally you should do this course 6 to 12 months prior to your sitting, then go back to your unit, practice the skills learned and then sit the exam. Of course trainees who are about to undertake the final fellowship examinations will also find this course valuable.

The course runs for 2 days and will include interactive pre-reading, skills teaching and assessment

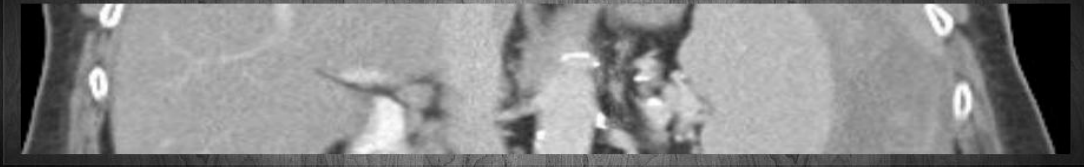
The areas that will be covered include the hot case, VIVAs and communication. All learning opportunities will be undertaken in an environment that attempts to mimic as closely as possible the conditions experienced in the exam. The second day of the course will include a formal hot case in the Royal Melbourne Hospital Intensive Care Unit (ICU).

Prior Knowledge

This course will not be a “content teaching” exercise, but a course that will teach *skills*. Participants in this course should have a good (basic) working knowledge of intensive care medicine appropriate for the exam. We will utilise this base to provide a framework to answer the clinical scenarios and questions frequently posed by the examiners.



The Melbourne Clinical Exam Course



Course Dates and Location

The course will run from the 8th to the 9th September 2011 in the Clinical Skills Centre at the Royal Melbourne Hospital, Grattan Street, Parkville, Victoria, 3050. Parking will be available at discounted prices for course participants.

Cost

The cost for the course is \$390 (GST Inclusive) for full participants.
\$190 (GST Inclusive) will be the charge for observers. Please note that payment **MUST** be made by Friday 18th August 2011, or your position will be offered to another applicant.
Once payment has been made, cancellations within 2 weeks of the course will be refunded at a rate of 50%. Cancellations after 1st September 2011 will not be refunded.

Positions on the course are strictly limited and will be allocated on a first-come-first-served basis from Wednesday 1st June 2011.

There are twenty places available for participating candidates.

We will provide observer positions to those who miss out on a place, with observers being offered a full position on the course in the event of any cancellations.

Accommodation

Should you require accommodation, there are many hotels near the hospital. We can help if you require further information.

Contact

Web: www.rmhicu.org.au

Email: mcec@rmhicu.org.au

